

Prognostic assessment of the Meet-URO score compared with the IMDC score in Metastatic Renal Cell Carcinoma patients receiving 1st line systemic therapies (Meet-URO 33 study)

Sara Elena Rebuzzi¹, Carlo Messina², Lucia Bonomi³, Sarah Scagliarini⁴, Silvia Chiellino⁵, Brigida Anna Maiorano⁶, Filippo Maria Deppieri⁷, Alessia Cavo⁸, Vincenza Conteduca⁹, Silvia Zai¹⁰, Paolo Andrea Zucali¹¹, Martina Rabino¹², Francesca Vignani¹³, Francesca La Russa¹⁴, Claudia Mucciarini¹⁵, Claudia Caserta¹⁶, Federico Paolieri¹⁷, Davide Bimbatti¹⁸

1. Medical Oncology Unit 2, AOU Città della Salute e della Scienza di Torino, Torino; 2. Oncology Unit, A.R.N.A.S. Civico Palermo, Palermo; 3. Department of Oncology and Hematology, ASST Papa Giovanni XXIII, Bergamo; 4. Department of Medical Oncology, AORN "A. Cardarelli", Napoli; 5. Unit of Oncology, Department of Oncology, Fondazione IRCCS Policlinico San Matteo, Pavia; 6. Department of Medical Oncology, IRCCS San Raffaele Hospital, Milano; 7. UOC Oncologia - AULSS3 Serenissima Ospedale dell'Angelo, Venezia; 8. Oncology Unit, Villa Scassi Hospital, Genova; 9. Unit of Medical Oncology and Biomolecular Therapy, Department of Medical and Surgical Sciences, University of Foggia, Policlinico Riuniti, Foggia; 10. Medical Oncology Unit, Azienda Ospedaliera SS. Antonio e Biagio e Cesare Arrigo, Alessandria; 11. Medical Oncology and Hematology Unit, IRCCS Humanitas Research Hospital, Rozzano; Department of Biomedical Sciences, Humanitas University, Pieve Emanuele, Milano; 12. Medical Oncology, University of Torino, Torino; 13. Division of Medical Oncology, Ordine Mauriziano Hospital, Torino; 14. Department of Oncology, Ospedale San Bortolo, Vicenza; 15. Oncology Unit, AUSL Modena, Ramazzini Hospital, Carpi; 16. Dipartimento di Oncologia, Azienda Ospedaliera Santa Maria of Terni, Terni; 17. Department of Oncology, Hospital of Prato, Azienda USL Toscana Centro, Prato; 18. Oncology Unit 1, Istituto Oncologico Veneto, IOV - IRCCS - Padova.

Background

- Immuno-combinations are the standard 1st line therapy in mRCC, regardless of the risk group. The IMDC score is the standard of care of risk assessment;
- The Meet-URO score is a novel prognostic model, combining IMDC score + NLR + Bone metastases (PMID 36493602), developed in the immunotherapy era. It has shown better prognostic performance compared with the IMDC score mRCC patients receiving different therapeutic strategies in different settings;
- The application of the Meet-URO score in the first-line setting with all systemic therapeutic strategies was awaited.

Methods

- The Meet-URO 33 is an Italian multicentric prospective observational study enrolling mRCC patients receiving 1st line systemic therapy according to clinical practice;
- A retrospective cohort of patients treated from 01.01.2021 was included;
- The Meet-URO score was compared with the IMDC score in predicting OS;
- Exploratory analysis on PFS was conducted.

Results

- 1557 patients were enrolled, 1400 (90%) were assessable;
- Median age was 66 years, 75% were males, 84% had clear cell histology and 64% underwent nephrectomy;
- 20% received ICI-ICI (Nivo + Ipi), 66% ICI-TKI (32% Pembro + Axi), 14% TKI;
- 45% had NLR \geq 3.2, 29% bone metastases;
- After a mFU of 14.1 months, mOS was 40.5 months and mPFS 16.8 months;
- The Meet-URO score confirmed a better prognostic stratification compared with the IMDC score (c-index: 0.714 vs 0.688) (**Table 1, Figure 1**);
- The Meet-URO score showed a similar PFS performance compare to the IMDC score (c-index: 0.62 vs 0.61) (**Table 2**).

Contacts:

Sara Elena Rebuzzi:

saraelena89@hotmail.it;

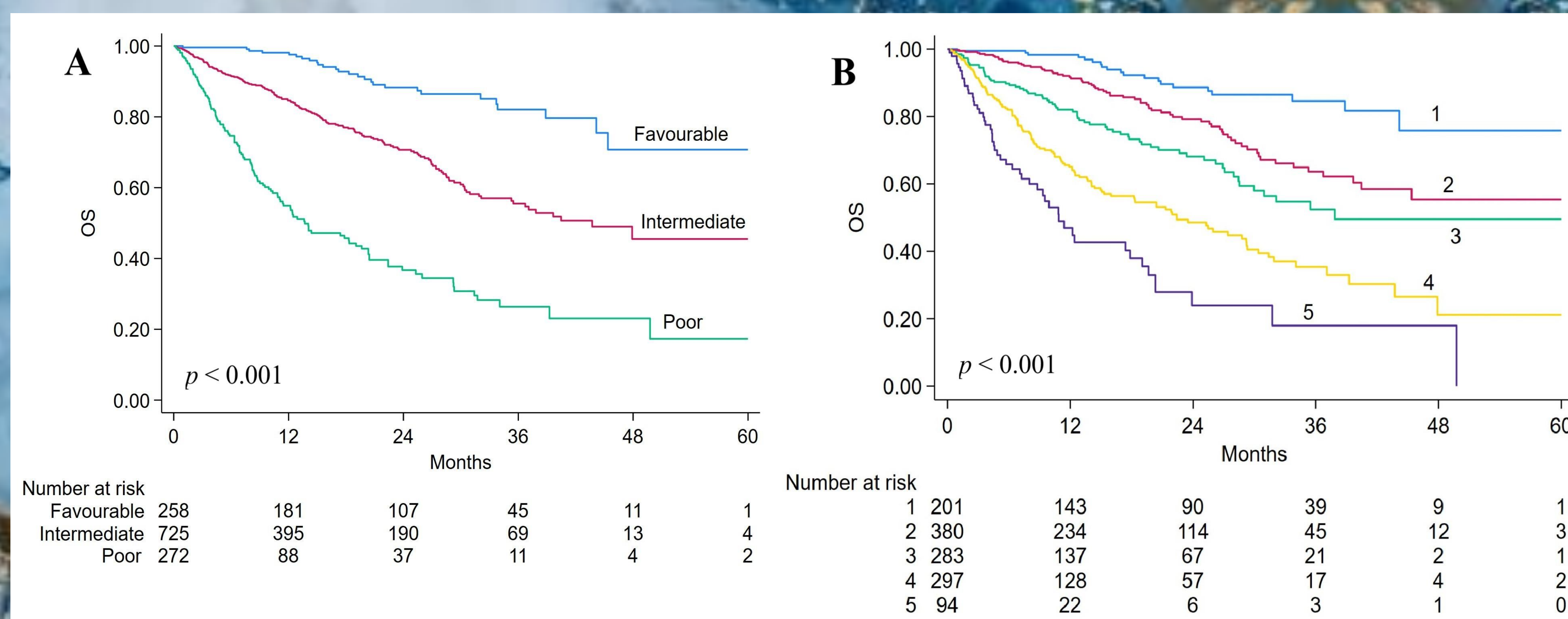
davide.bimbatti@iov.veneto.it

No conflict of interest to declare



Score	N (%)	HR (95% CI)	p value	mOS (mo)	RMST (mo)	3y-OS	c-index (95% CI)
Meet-URO							0.714 (0.689-0.740)
1	201 (16.0)	Ref.		NR	33.5	85%	
2	380 (30.3)	2.19 (1.34-3.56)	0.002	NR	30.4	64%	
3	283 (22.5)	3.62 (2.22-5.90)	<0.001	37.8	26.9	52%	
4	297 (23.7)	6.76 (4.25-10.75)	<0.001	22.4	21.4	35%	
5	94 (7.5)	12.59 (7.54-21.04)	<0.001	10.9	15.2	18%	
IMDC							0.688 (0.663-0.713)
Favorable	258 (20.5)	Ref.		NR	33.4	82%	
Intermediate	725 (57.8)	2.97 (1.99-4.42)	<0.001	43.7	27.7	56%	
Poor	272 (21.7)	8.45 (5.61-12.73)	<0.001	13.7	18.3	26%	

Table 1. OS performance: Meet-URO score vs IMDC score



QR code
Meet-URO score

Conclusions

- The Meet-URO score confirmed its better prognostic accuracy compared with IMDC score in the immunotherapy era, also in a large-scale mRCC cohort receiving 1st line systemic therapies;
- The adoption of the Meet-URO score should be implemented in routine clinical practice and as stratification factor of clinical trials for more individualized patient management.